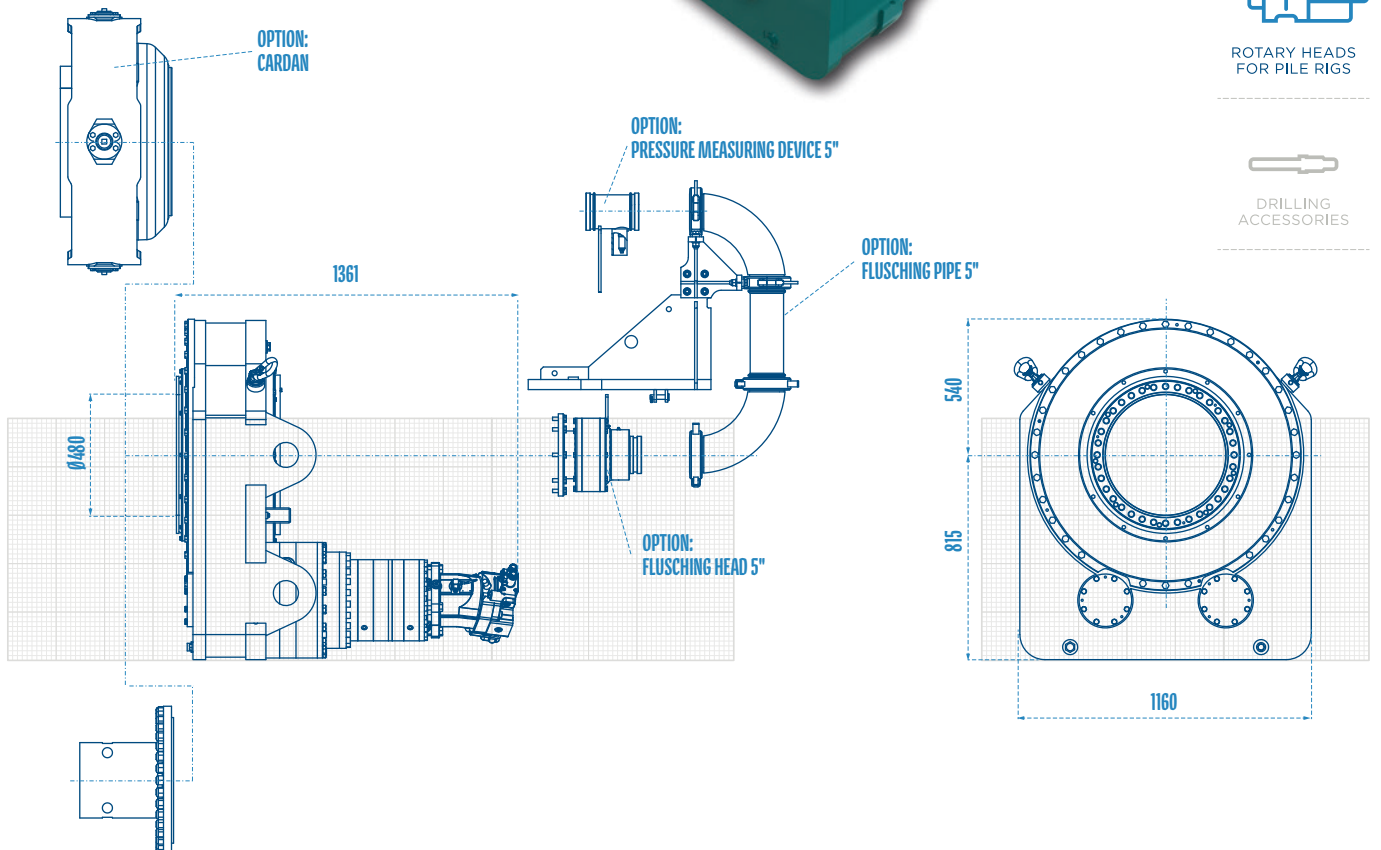
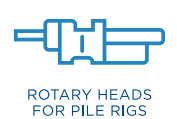
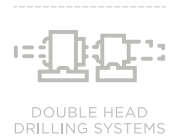
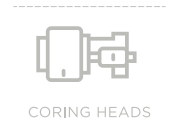
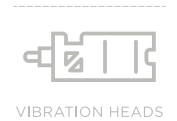
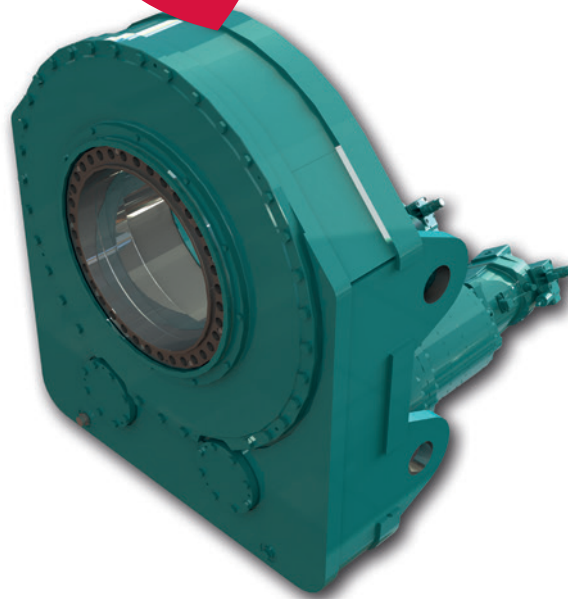


RHP 30

Torque
300 KNM
Drehmoment

Options Optionen

- > Hydraulic or electric shifting
Hydraulische oder elektrische
Schaltung
- > Mounting plates
Montageplatten
- > Speed measuring
Drehzahlmessung
- > Pendulum part
Kardangelenk

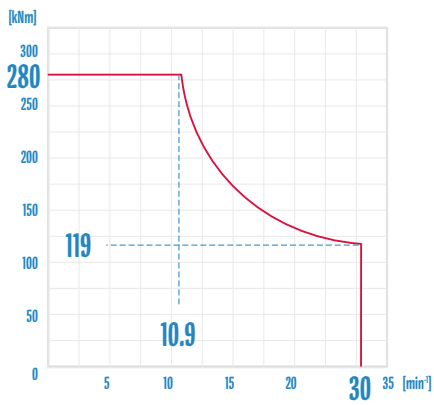


Technical Specifications are subject to modifications without prior notice and incurring responsibility for machines previously sold. The shown machines may have optional equipment. Technical data do not consider power losses. Error misprints reserved. / Technische Änderungen ohne Vorankündigung und Verpflichtung gegenüber früher gelieferten Geräten. Die abgebildeten Geräte können Sonderausstattungen haben. Technische Daten ohne Berücksichtigung des Wirkungsgrades. Irrtum und Druckfehler vorbehalten.



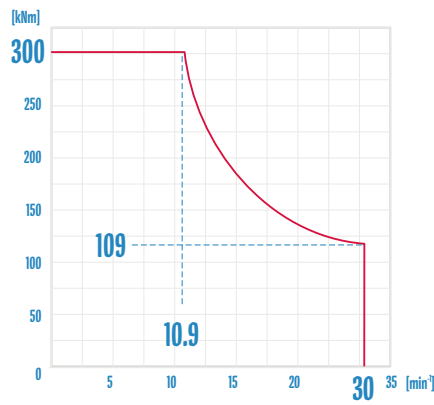
3100 kg **Weight** Gewicht · 650 kN **Traction** Zugkraft

Gear box 1 / Casing RHP 30
Getriebe 1 / Rohr



p = 320 bar & Q = 600 l/min

Gear box 2 / Auger RHP 30
Getriebe 2 / Schnecke



p = 345 bar & Q = 600 l/min