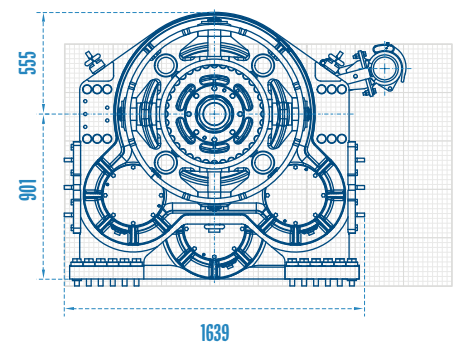
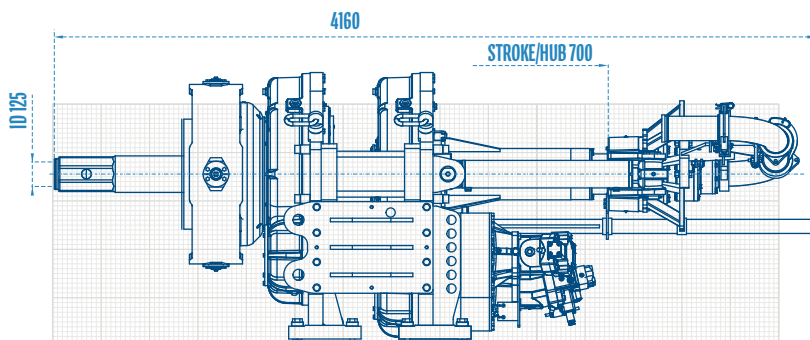
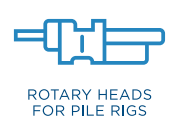
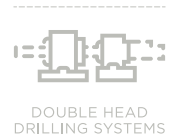
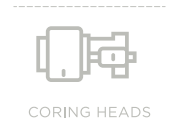
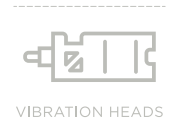
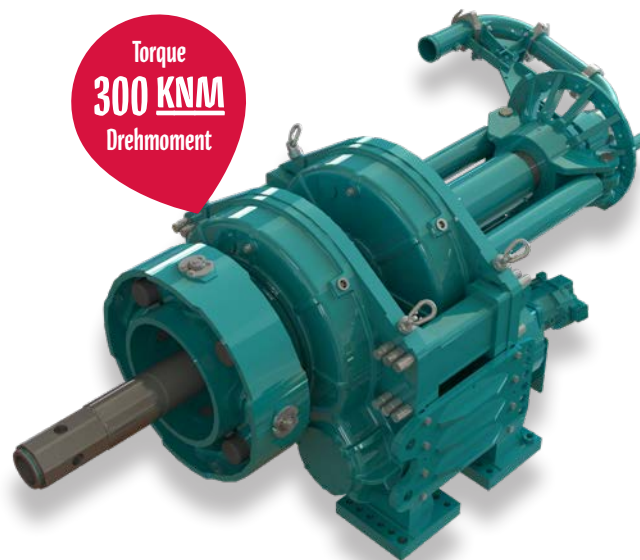


VDW 3015

Options Optionen

- > Hydraulic or electric shifting
Hydraulische oder elektrische
Schaltung
- > Mounting plates
Montageplatten
- > Speed measuring
Drehzahlmessung
- > Pendulum part
Kardangeln
- > Path measurement for relative
adjustment
Wegmessung für
Relativverschiebung



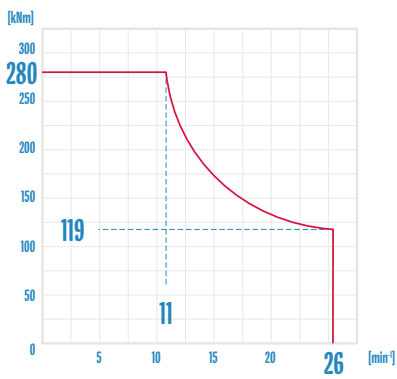
Technical Specifications are subject to modifications without prior notice and incurring responsibility for machines previously sold. The shown machines may have optional equipment. Technical data do not consider power losses. Error misprints reserved. / Technische Änderungen ohne Vorankündigung und Verpflichtung gegenüber früher gelieferten Geräten. Die abgebildeten Geräte können Sonderausstattungen haben. Technische Daten ohne Berücksichtigung des Wirkungsgrades. Irrtum und Druckfehler vorbehalten.



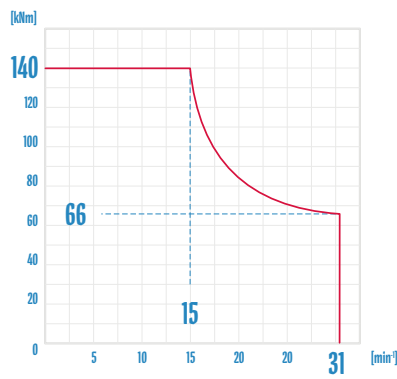
8600 kg **Weight** Gewicht · 850 kN **Traction** Zugkraft

Gear box 1 / Casing VDW 3015
Getriebe 1 / Rohr

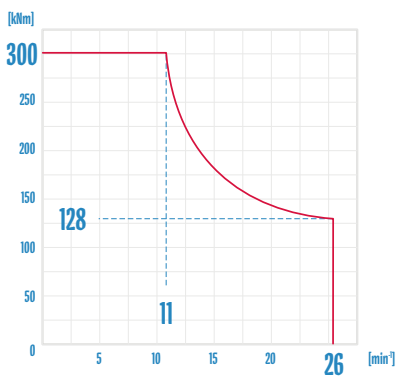
Gear box 2 / Auger VDW 3015
Getriebe 2 / Schnecke



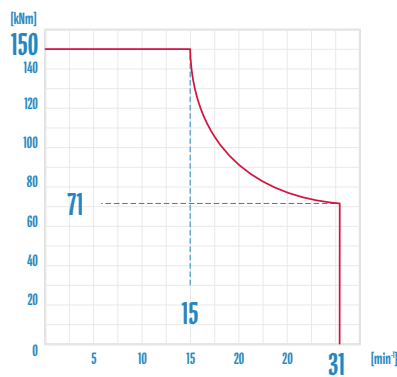
p = 320 bar & Q = 600 l/min



p = 320 bar & Q = 400 l/min



p = 345 bar & Q = 600 l/min



p = 345 bar & Q = 400 l/min